

ORG FUNCTION: PUBLIC SAFETY
Department Number 210

Richard McQuade
Police Chief

Salaries:	\$5,761,612	1.2%
Expenses:	\$582,503	(5.5%)
Total Budget FY23:	\$6,344,115	0.5%

Mission & Services Overview

MISSION: We, the members of the North Attleboro Police Department, are Committed, take Pride and are Dedicated to the needs of our community in the delivery of quality police services in an effective, responsive and professional manner. We recognize and accept our responsibility to maintain order while affording dignity and respect to each and every individual that we encounter. Our objective is to improve the quality of life through community and interagency partnerships to thereby promote a safe and secure community for all.

VISION: To optimize the efficient use of police resources, the North Attleboro Police Department maintains a balance between responding quickly and professionally to all forms of crime, emergencies, and homeland security concerns while also actively engaging the community we serve in setting priorities for the department as well as collaborating on problem solving and crime prevention efforts and approaches. Recognizing that quality of life begins with public safety, the members of the North Attleboro Police Department and its community stakeholders shall continue to form lasting and successful partnerships with other law enforcement, government and civic agencies to address all crime and disorder issues. In doing so, we will continue to be guided by the Department's core values of Respect, Dignity, Integrity and Fairness in all of our future endeavors.

VALUES: We, the members of the North Attleboro Police Department, are dedicated police professionals committed to the community we serve, sensitive to the needs and wants of our citizens, holding ourselves accountable to the highest standards of excellence and integrity and treating all citizens that we encounter with respect and dignity.

FY22 Accomplishments

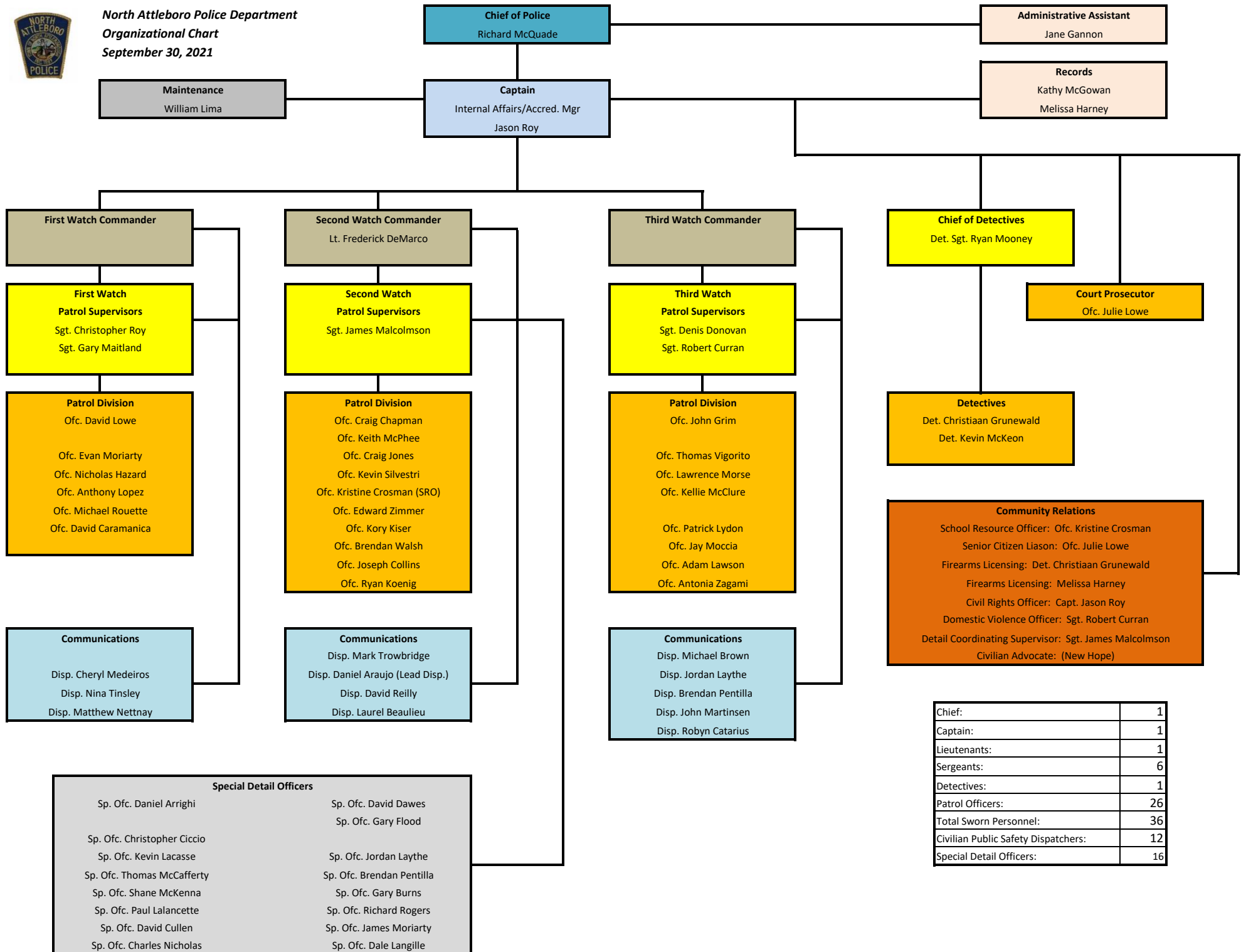
- Enter your FY22 Accomplishments here
- New RMS system will be implemented by the end of FY22.
- Started HVAC project (complete overhaul). HVAC study is under way.
- Hired 9 police officers to fill vacancies.
- Changed some of the marked cruisers from gasoline engines to hybrid engines.
- The below items will be accomplished with Municipal Relief Act Money in May/June if allowed.
- Less than lethal tool-BolaWrap-hand held restraint tool
- New service weapons (pistols) for entire department
- New AED's (Automated External Defibrillator) approximately 8 AED's which will replace all current AED's which will also make the AED's compatible with NAFD's AED's.
- Rugs and downstairs floor (rubber floor) need replacing.
- Color copier for records department.

FY23 Goals and Objectives

- Enter your FY23 Goals here
- Appropriately paid, fully staffed, diverse police department.
- A full time IT person (in-house) who can attend to the daily needs of the police department.



North Attleboro Police Department
Organizational Chart
September 30, 2021



Chief:	1
Captain:	1
Lieutenants:	1
Sergeants:	6
Detectives:	1
Patrol Officers:	26
Total Sworn Personnel:	36
Civilian Public Safety Dispatchers:	12
Special Detail Officers:	16

04/07/2022 11:29
mborg

TOWN OF NORTH ATTLEBOROUGH
NEXT YEAR BUDGET HISTORICAL COMPARISON

P 1
bgnyrpts

PROJECTION: 20231 OPERATING BUDGET FOR FISCAL 2023

FOR PERIOD 99

ACCOUNTS FOR:

GENERAL FUND	PRIOR FY3 ACTUALS	PRIOR FY2 ACTUALS	LAST FY1 ACTUALS	CY ACTUALS	CY REV BUDGET	PROJECTION LEVEL 2	PCT CHANGE
210 POLICE DEPARTMENT							
POLICE SALARIES	4,713,122.18	4,874,984.30	4,807,323.18	3,499,862.96	5,694,800.00	5,761,612.00	1.2%
POLICE EXPENSES	524,886.99	413,845.59	437,811.55	303,747.75	616,321.00	582,503.00	-5.5%
POLICE DEPARTMENT	5,238,009.17	5,288,829.89	5,245,134.73	3,803,610.71	6,311,121.00	6,344,115.00	.5%
TOTAL GENERAL FUND	5,238,009.17	5,288,829.89	5,245,134.73	3,803,610.71	6,311,121.00	6,344,115.00	.5%
GRAND TOTAL	5,238,009.17	5,288,829.89	5,245,134.73	3,803,610.71	6,311,121.00	6,344,115.00	.5%

** END OF REPORT - Generated by Michael Borg **